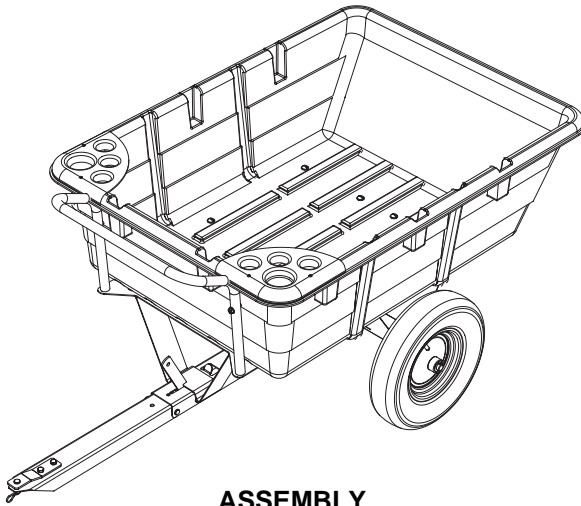


5301461
MODEL NO. TC-10-P

5301474
MODEL NO. TC-10-P-BOM

10 CU. POLY TRAILER CART **ASSEMBLY / OPERATION INSTRUCTIONS / PARTS**



ASSEMBLY

STEP 1: Turn plastic cart body (15) upside down for ease of assembly.

STEP 2: Bolt axle housing (27) to the underside of the cart body using the 3/8" - 16 round head screws (25).

NOTE A 3/8" flat washer (5) should be placed between the head of each screw and the plastic cart body.

STEP 3: Bolt handle (28) and yoke brace (12) to the front of the cart (sandwich the flat plate on the handle between the plastic cart body and the yoke brace when bolting).

STEP 4: Bolt the front tubes of the handle to the plastic body using the 5/16" - 18 bolts (9) provided.

STEP 5: Position the folding tongue assembly (pieces 18 & 19 combined) on the axle housing and the yoke brace so the tongue latch (17) is forward and pointing downward.

STEP 6: Slip the axle shaft (8) into the axle housing and through the rear of the folded tongue assembly.

STEP 7: Position tires (7) on axle shaft.

STEP 8: Place 3/4" machinery bushings (14) on the axle shaft.

STEP 9: Cotter pin (21) wheels in place.

STEP 10: Remove hairpin cotter (20) and 5/16" clevis pin (22) from the tongue assembly.

STEP 11: Unfold tongue assembly and replace 5/16" clevis pin with hairpin cotter in front hole.

STEP 12: Invert trailer.

STEP 13: Ready for use.

USING YOUR DUMP CART

To Dump: Pull latch toward mower, and cart body will tilt back to dump position.

To Return To Pulling Position: Push down on the front of the cart body until latch engages and pedestal secures to the tow bar.

Tractor speed should be governed by weight of load. The heavier the load, the slower the speed for safe operation.

MAINTENANCE INSTRUCTIONS

Check tire pressure at regular intervals. Proper inflation will prolong life of tires.

NOTE: 700 lbs. maximum capacity

Approximate weight 1 Cu. Ft.

Dirt: 150 lbs.

Sand: 125 lbs.

Gravel: 110 lbs.

Max Speed: 4 MPH

WARNING DANGER OF IMPROPER USE OF TRAILER CART

This unit is intended for use only with riding mowers or tractors. It is definitely not for highway use, being pulled at high speeds, or transporting passengers of any sort. Such use could result in injuries for which we cannot be held responsible.

**PLEASE DO NOT RETURN THIS MERCHANDISE TO THE
STORE. CALL US AND WE WILL TAKE CARE OF ANY
PROBLEM YOU MIGHT HAVE WITH THIS PRODUCT.**

HOW TO ORDER PARTS:

When ordering parts, always give model number, part number, part description and inspector number.

SEND TO:

FIMCO INC. • 1000 Fimco Lane • North Sioux City, SD 57049
800-831-0027 • P: 605-232-6800 • F: 605-232-6814



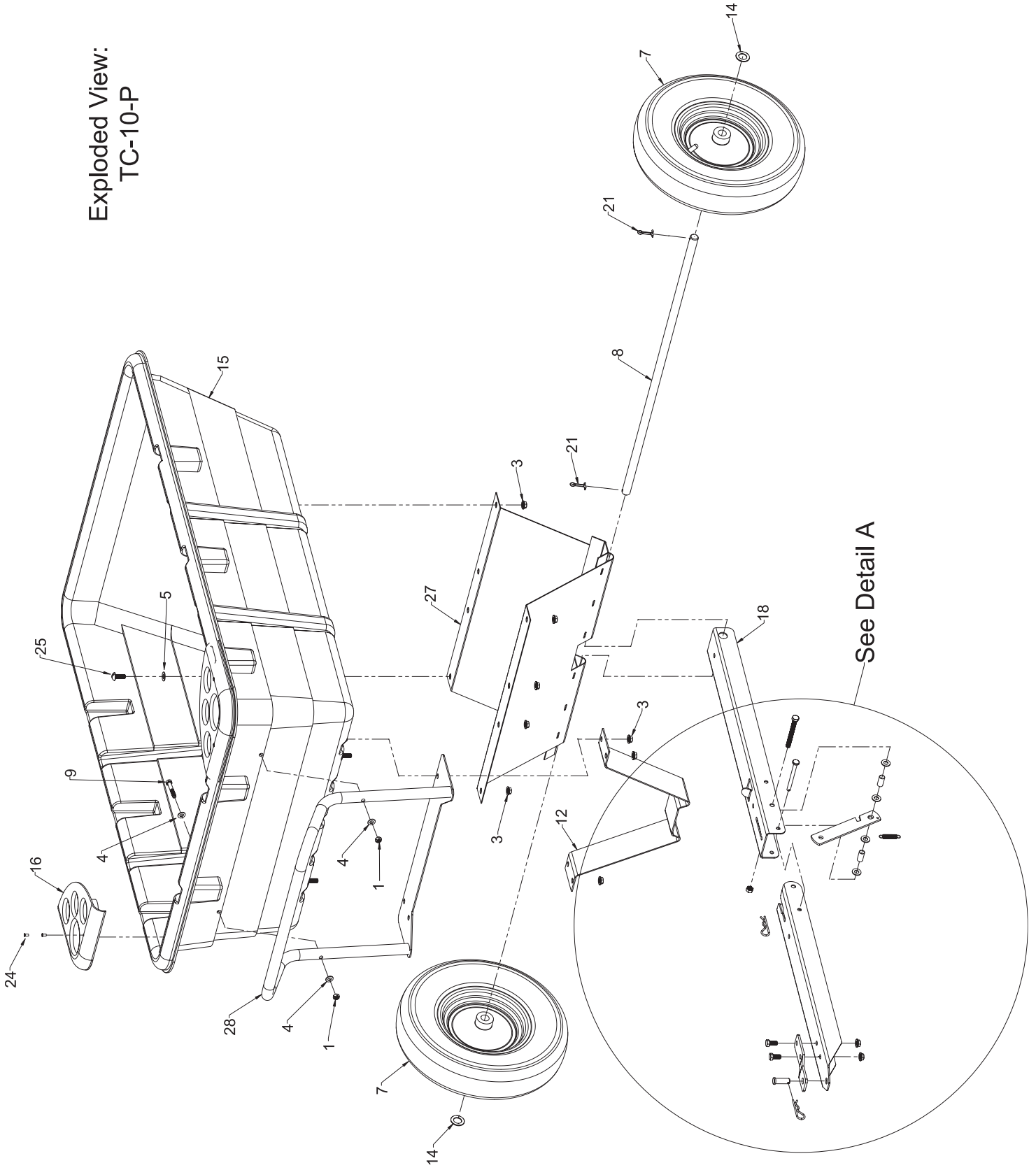
WWW.FIMCOINDUSTRIES.COM

1000 FIMCO LANE • P.O. BOX 1700 • NO. SIOUX CITY, SD 57049
TOLL FREE: 800-831-0027 • TOLL FREE FAX: 800-494-0440
Form No. 5004667 (970 11/05) Printed In U.S.A.

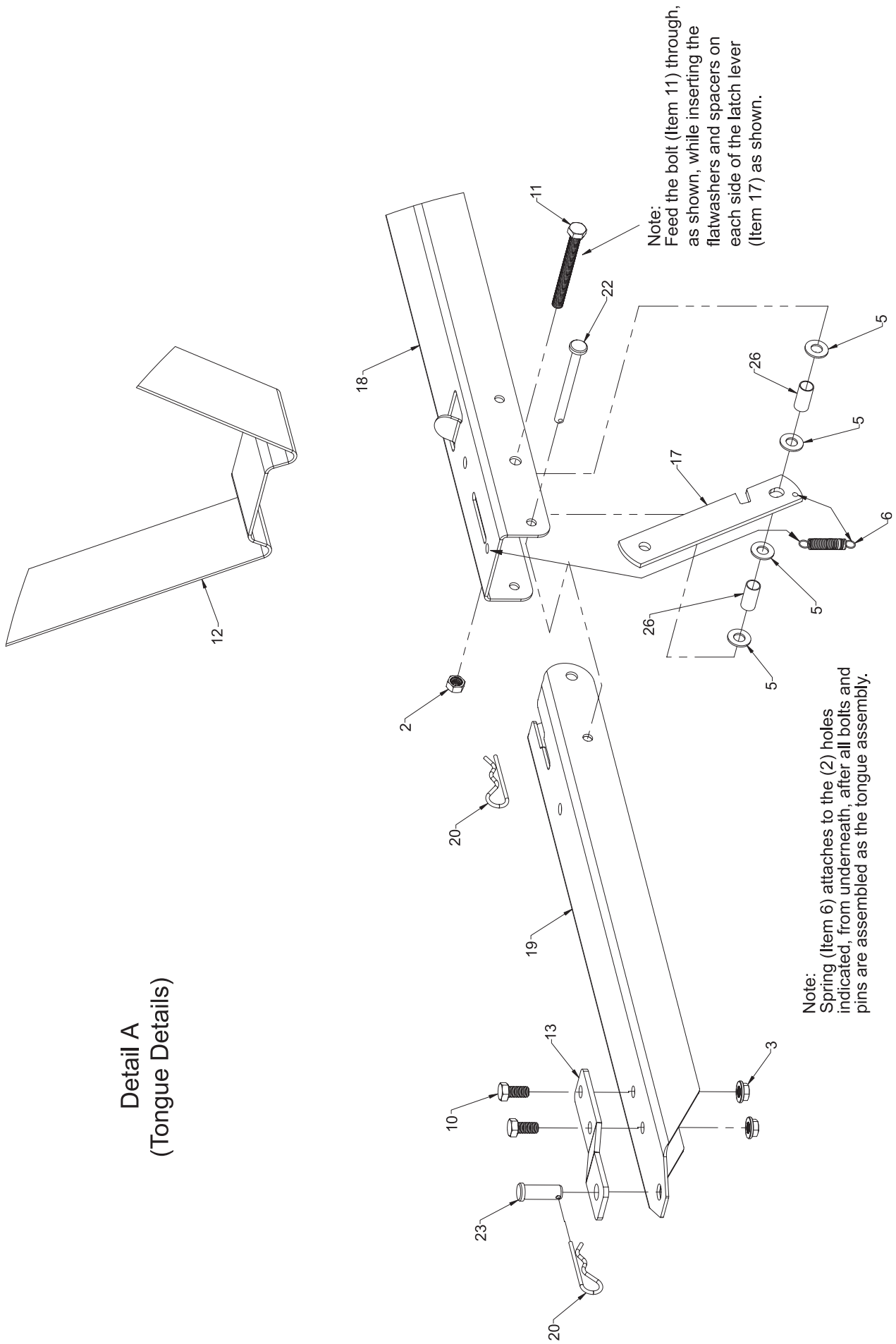
LIMITED WARRANTY

This unit is warranted against defects in materials and workmanship to the original purchaser, under normal use and service, for a period of ninety (90) days from date of sale. During the warranty period, we will repair or replace at our option free of charge to the original purchaser, any part of the unit that our examination shows to be defective in workmanship or materials. This warranty does not apply to damage in transit or damage caused by misuse, abuse, neglect, normal wear, or alterations by unauthorized persons.

Exploded View:
TC-10-P



Detail A (Tongue Details)



Repair Parts List for: TC-10-P

ITEM NO.	PART NUMBER	QTY	DESCRIPTION
1	5006035	2	5/16"-18 Hex Locknut
2	5006092	1	3/8"-16 Hex Locknut
3	5006259	14	3/8"-16 Hex Whiz (Flange) Locknut
4	5016020	4	Flatwasher, 5/16"
5	5016030	16	Flatwasher, 3/8"
6	5019263	1	Extension Spring (Tongue) (10 Cu. Poly Cart)
7	5021090	2	Tire, 4.80 x 8 (2-Ply)
8	5024099	1	Axle (10 Cu. Ft. Dump Cart)
9	5034088	2	H.H.C.S., 5/16"-18 x 1 3/4"
10	5034099	2	H.H.C.S., 3/8"-16 x 3/4"
11	5034560	1	3/8"-16 x 3 1/2" Full Thread Hex Tapping Bolt
12	5037617	1	Yoke Brace
13	5038722	1	10 Cu. Ft. Dump Cart Hitch
14	5041094	2	Machine Bushing, 3/4" I.D. (14 Ga.) x 1 1/4" O.D.
15	5083003	1	10 Cu. Ft. Poly Cart Hopper
16	5083004	2	Tool Caddy (10 Cu. Ft. Poly Cart)
17	5090009	1	Latch (Folding Tongue)
18	5096104	1	Rear Tongue Half
19	5096105	1	Tongue Front Half (10 Cu. Poly Cart)
20	5101065	2	#211 Hitch Pin Clip, (Hair-Pin Cotter 0.120")
21	5101086	2	Cotter Pin, 3/16" x 1 1/2" (Zinc-Plated)
22	5101266	1	5/16" x 3 1/2" Clevis Pin - Zinc Plated
23	5101268	1	1/2" x 1 1/2" Clevis Pin
24	5111025	4	Rivet, 3/16" Dia. x 3/8" Long
25	5117306	12	3/8"-16 Slotted Round Head Machine Screw x 1"
26	5127179	2	Spacer Tube
27	5275024	1	Axle Housing Weldment (10 Cu. Ft. Dump Cart)
28	5275054	1	Handle Weldment (10 Cu. Poly Cart)