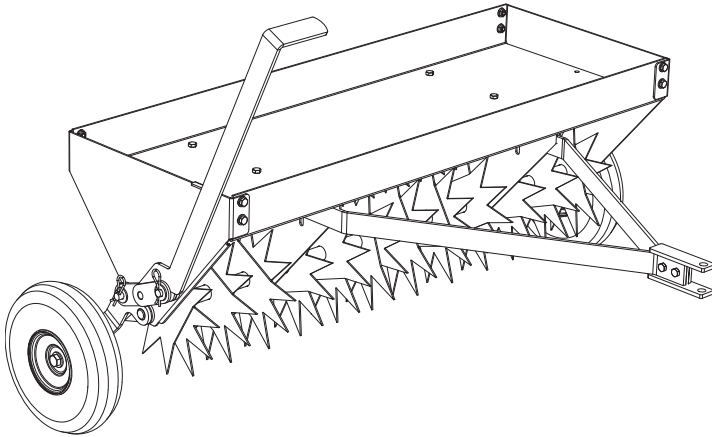


5301489
MODEL NO. SPK-42
42" Tow Behind Spike Aerator

ASSEMBLY / OPERATION INSTRUCTIONS / PARTS



GENERAL INFORMATION

The purpose of this manual is to assist you in operating and maintaining your spike aerator. Please read it carefully as it furnishes information which will help you achieve years of dependable trouble free operation.

WARRANTY / PARTS / SERVICE

Products are warranted for one year from date of purchase against manufacturer or workmanship defects.

Your authorized dealer is the best source of replacement parts and service. To obtain prompt, efficient service, always remember to give the following information:

1. Correct part description and part number.
2. Model Number of your sprayer.
3. Serial Number of your sprayer.

Part description and part numbers can be obtained from the illustrated parts list section of this manual.

Whenever you need parts or repair service, contact your distributor / dealer first. For warranty work always take your original sales slip, or other evidence of purchase date, to your distributor / dealer.

ASSEMBLY INSTRUCTIONS

Your spike aerator has been partially assembled at the factory for your convenience. It has been packaged "inverted" in the box. Remove the parts to the unit from the carton. Refer to the exploded view and parts list to help identify the parts.

Place the main frame on a flat surface, leaving the unit "inverted". This will be the best position for the tongue attachment procedure.

Tongue Attachment:

1. The tongue assembly will come packaged as shown in "Step 1".

2. Remove whiz locknuts from the bolts on the clevis and invert (1) tongue member as shown. (See Step 2)

3. Step 3 shows tongue bars bolted to the hitch clevis.

4. Step 4 shows hardware orientation at mounting location to unit. (Typ. both sides)

5. Bolt the tongue to the main unit. (Step 5)

Handle Attachment:

1. Position handle over pins indicated in step 1.
2. Place 1/2" flatwashers over pins shown in step 2.
3. Secure in place with hairpin cotters per step 3.

OPERATING INSTRUCTIONS

Aerating produces holes in the ground that allows water, fertilizer, and air to permeate the soil and reach the roots. It is recommended that the lawn be mowed and clippings removed prior to aerating. Water the ground as necessary. This will soften up the soil for the aerator to penetrate the ground easier.

Your plug aerator should be attached to your rider or tractor on a level surface and the wheels should be in the lowered position. (handle in the locked position)

Once you are ready to use your aerator, use a low gear and then disengage the wheels by moving the handle out of the locked position. Once you start moving, the tines will be forced into the ground. Speed should only be increased only as ground conditions permit. Recommended speed is approx. 3-5 m.p.h.. Aeration should be done in a straight line.

CAUTION:

Do not turn sharply, as this may damage the ground. The top tray provides a place for you to put weights. More weight will allow the tines to penetrate the ground deeper. Maximum weight is approx. 100 lbs..

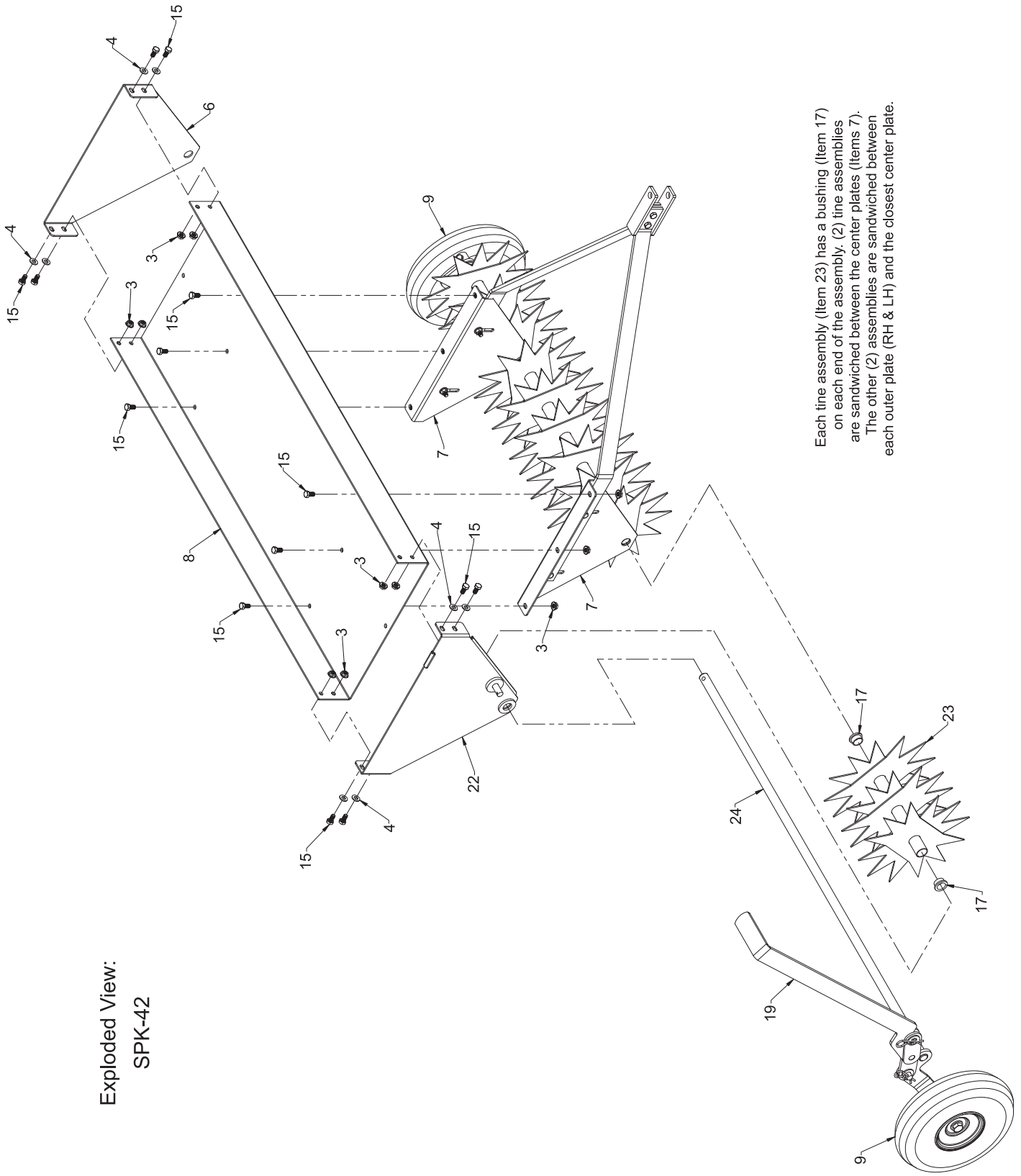
Do not pull your aerator over hard surfaces with the wheels disengaged! This will damage/bend the tines.



WWW.FIMCOINDUSTRIES.COM

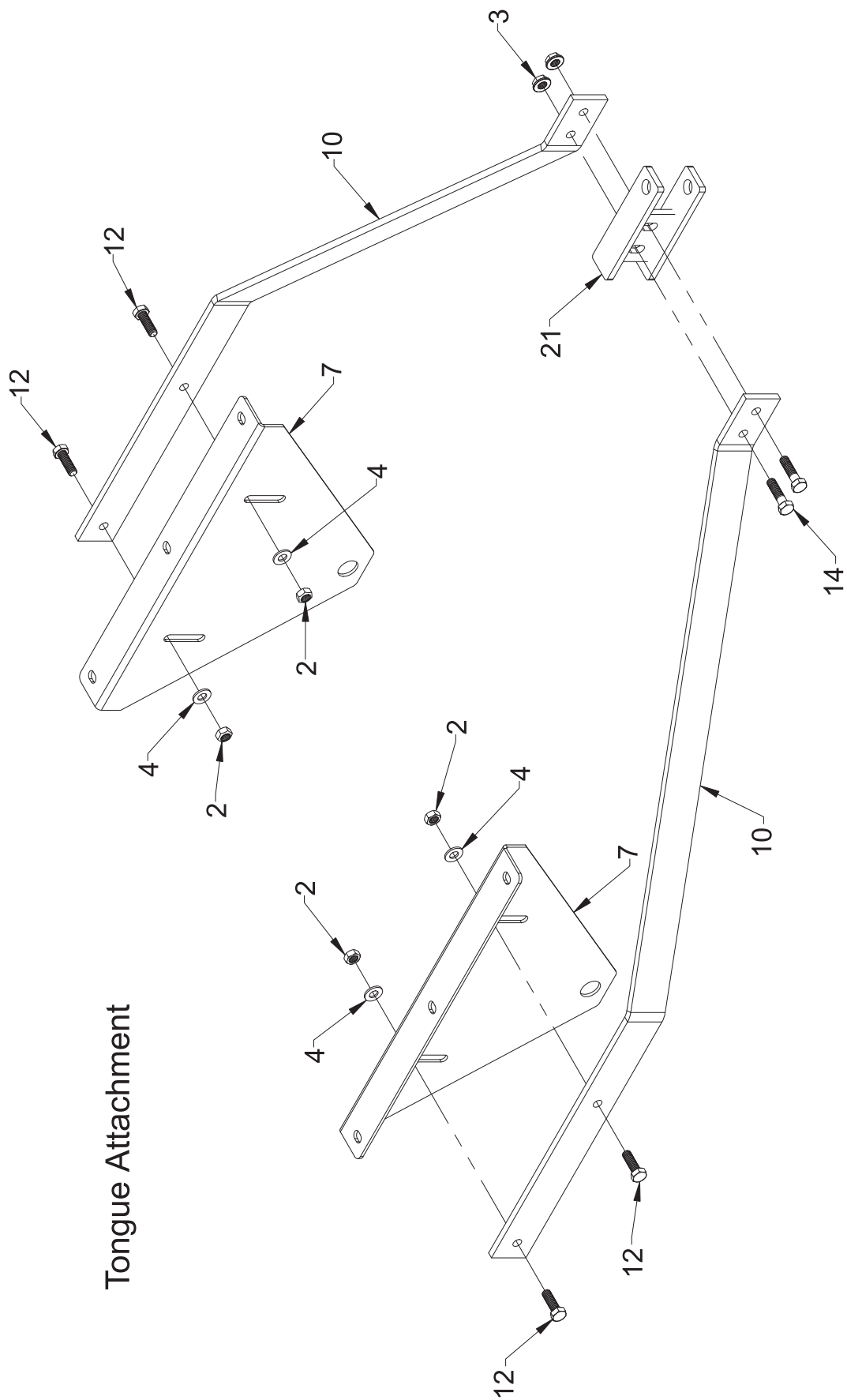
1000 FIMCO LANE • P.O. BOX 1700 • NO. SIOUX CITY, SD 57049
TOLL FREE: 800-831-0027 • TOLL FREE FAX: 800-494-0440
Form No. 5004702 (1110 12/05) Printed In U.S.A.

Exploded View:
SPK-42



Each line assembly (Item 23) has a bushing (Item 17) on each end of the assembly. (2) line assemblies are sandwiched between the center plates (Items 7). The other (2) assemblies are sandwiched between each outer plate (RH & LH) and the closest center plate.

Tongue Attachment



5 EASY STEPS TO ATTACH TONGUE TO UNIT

STEP 1



TONGUE, AS IT IS PACKAGED

STEP 2



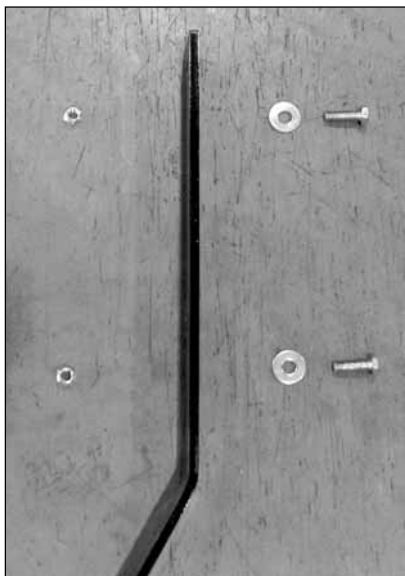
TONGUE WHIZ NUTS REMOVED

STEP 3



TONGUE ASSEMBLED TO HITCH CLEVIS

STEP 4



MOUNTING HARDWARE
ORIENTATION

STEP 5



TONGUE BEING ASSEMBLED TO UNIT

3 EASY STEPS TO ATTACH HANDLE TO UNIT

STEP 1



HANDLE ATTACHMENT TO PINS

STEP 2



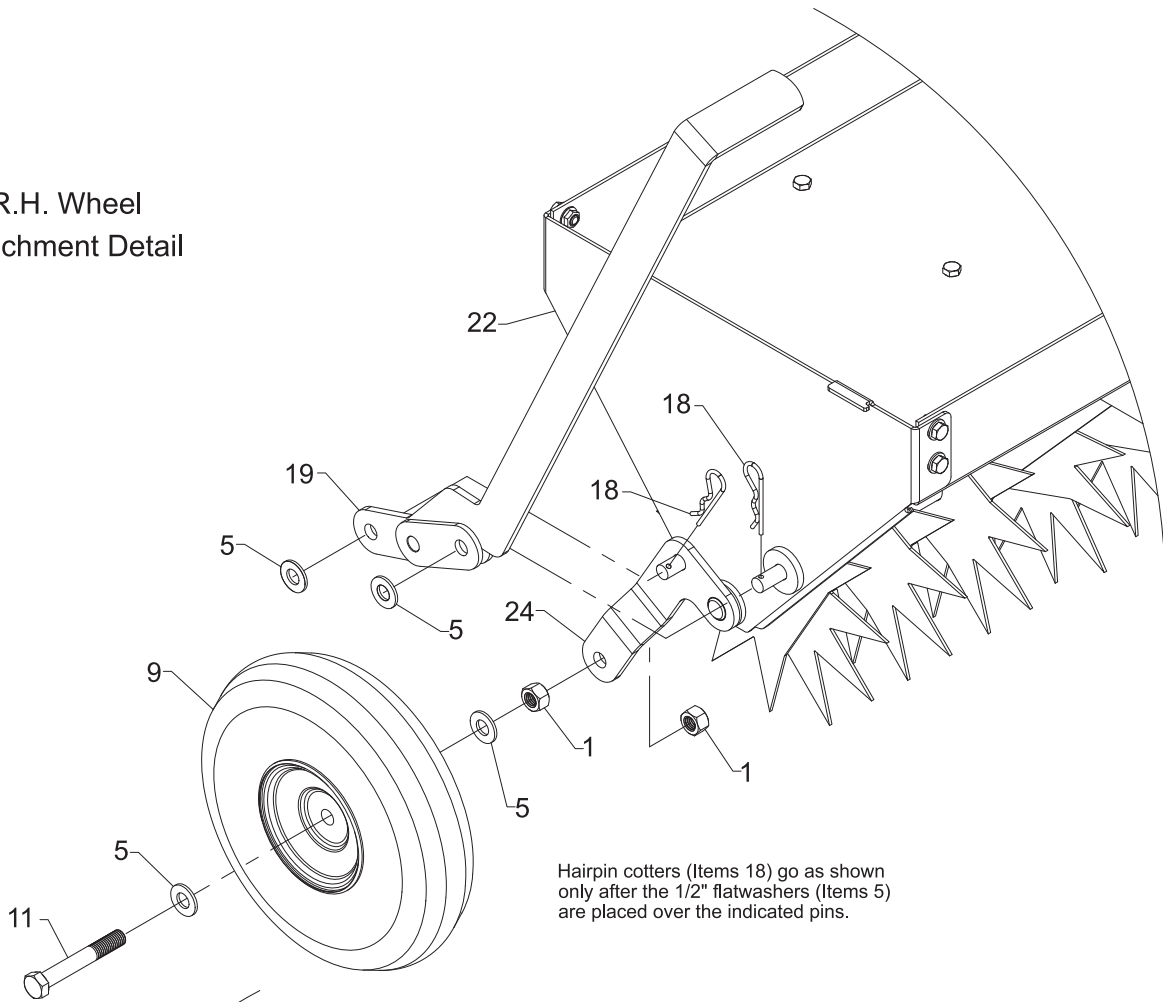
WASHER PLACEMENT

STEP 3



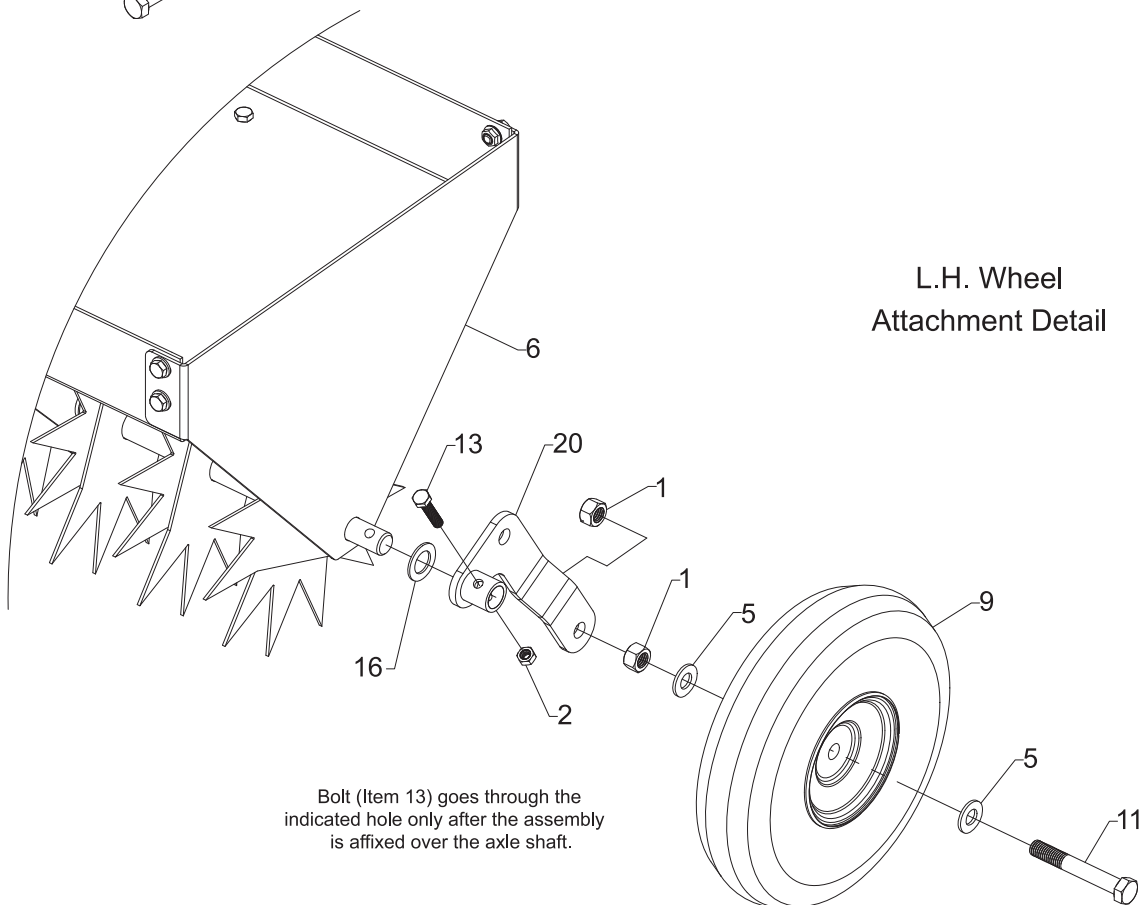
ASSEMBLED HANDLE

R.H. Wheel
Attachment Detail



Hairpin cotters (Items 18) go as shown only after the 1/2" flatwashers (Items 5) are placed over the indicated pins.

L.H. Wheel
Attachment Detail



Bolt (Item 13) goes through the indicated hole only after the assembly is affixed over the axle shaft.

Repair Parts List for Model: SPK-42

ITEM NO.	PART NUMBER	QTY	DESCRIPTION
1	5006011	4	1/2"-13 Hex Nut
2	5006035	5	5/16"-18 Hex Locknut
3	5006307	16	5/16"-18 Hex Whiz (Flange) Locknut
4	5016020	12	Flatwasher, 5/16"
5	5016031	6	Flatwasher, 1/2"
6	5017987	1	Side Plate (L.H.) (Plug Aerator)
7	5017988	2	Center Plate
8	5017993	1	Upper Tray
9	5021030	2	4.10/3.50 x 4" Wheel (White) w/2 1/4" Offset Hub
10	5028308	2	Tongue Bar (Half)
11	5034022	2	H.H.C.S., 1/2"-13 x 3 1/2"
12	5034042	4	H.H.C.S., 5/16"-18 x 1"
13	5034069	1	H.H.C.S., 5/16"-18 x 1 1/2" (Full Thread)
14	5034076	2	H.H.C.S., 5/16"-18 x 1 1/4"
15	5034154	14	H.H.C.S., 5/16"-18 x 5/8"
16	5041094	1	Machine Bushing, 3/4" I.D. (14 Ga.) x 1 1/4" O.D.
17	5041143	8	Bushing, 3/4" (Shaft) x 7/8" O.D. x 1/2" Long
18	5101065	2	#211 Hitch Pin Clip, (Hair-Pin Cotter 0.120")
19	5275283	1	Handle Weldment (Plug & Spike Aerator)
20	5275284	1	Wheel Mount Weldment (L.H.)
21	5275285	1	Bolt-On Hitch Weldment
22	5275287	1	Side Plate Weldment (Plug & Spike Aerator)
23	5275291	4	Tine Mount Plate Weldment (Spike Aerator)
24	5275292	1	Axle Mount Weldment (Spike Aerator)