

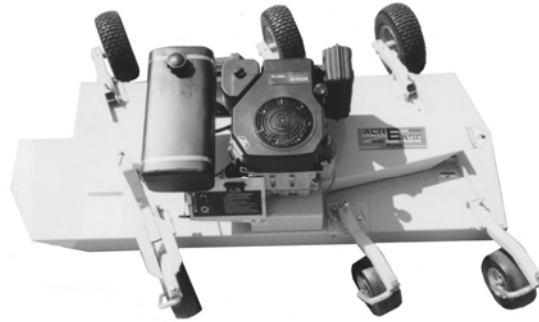
# INSTALLATION INSTRUCTIONS

**AcrEase**

Floatation Kits  
003902 & 003904

Kunz Engineering Inc.

Mendota, IL



**READ THE COMPLETE INSTALLATION INSTRUCTIONS  
BEFORE STARTING THE INSTALLATION.**

**You should have the following parts with the appropriate floatation kits:**

**KIT # 003902**

- one rear axle assy.
- one wheel support

**KIT # 003904**

- one caster assy.
- one wheel support



**Before doing any installations or adjustments shut off mower engine.**

**A. INSTALL WHEEL SUPPORTS (Refer to Figure 1)**

1. The wheel supports should be positioned 14" to 18" in from the left front and left back tires.

**Note:** The floatation tires can be placed at any location between the existing tires. However, the top bolts should not interfere with the blade corral in the rear on the underside.

2. Using the holes in the wheel support as a template, drill four 13/32" diameter holes through the mower deck for each wheel support. Attach each wheel support with four 3/8" x 1" bolts, flat washers, lock washers, and nuts. Place the flat washers on the underside of the deck.

**B. INSTALL CASTER ASSY. AND REAR AXLE ASSY. (Refer to Figure 2)**

1. Place the caster assembly in the front wheel support and the rear axle assembly in the rear wheel support. Attach with 3/8" x 2-1/2" bolt, lock washer and nut.
2. Adjust the floatation tires so they are approximately 1/2" off the ground and then tighten the pivot bolts. Install one 3/8" x 2-1/2" bolt, lock washer and nut in each of the remaining holes in the wheel supports. Tighten the bolts to the point that the wheel height can still be adjusted but that the tire assemblies will not flop down when the deck is raised off the ground.

7/05

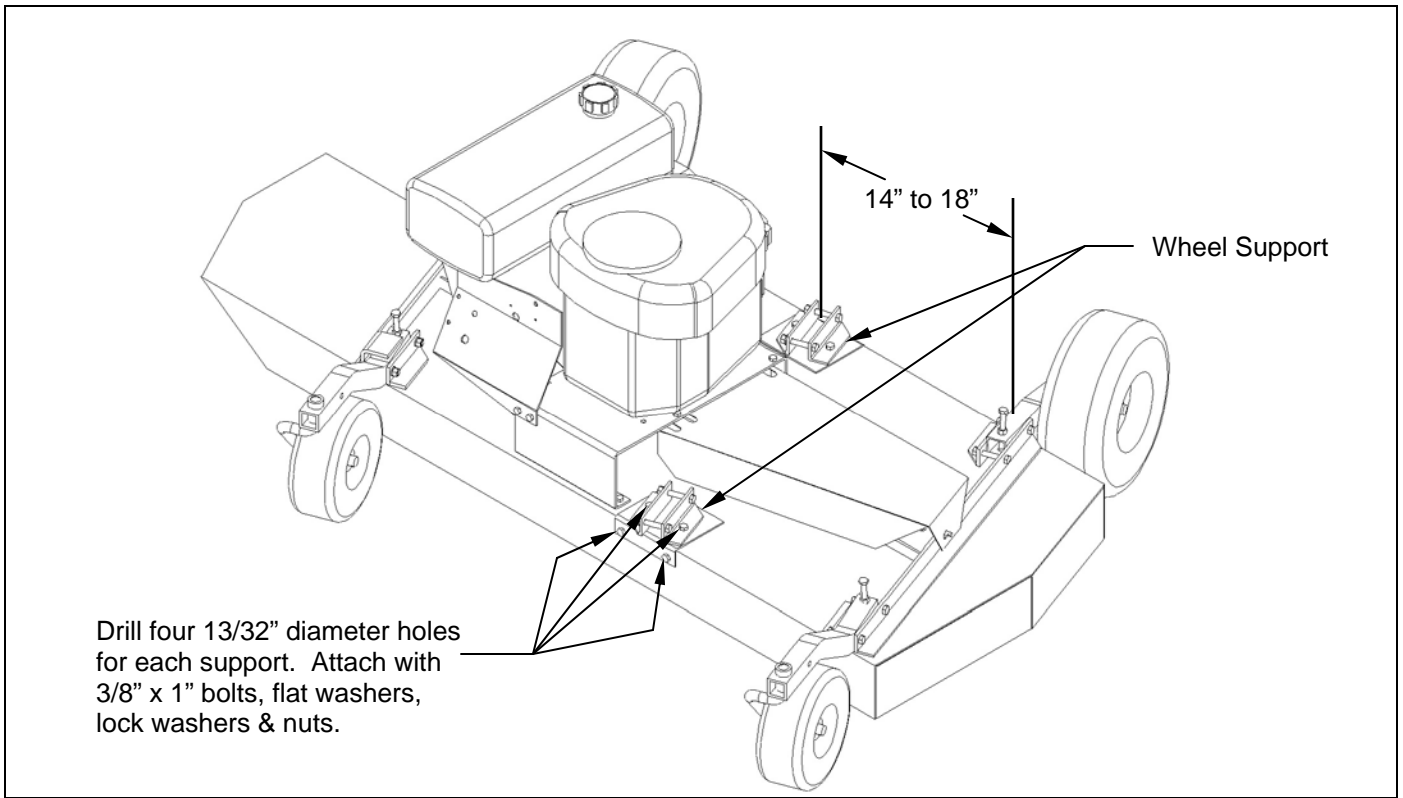


Figure 1: Installation of wheel supports

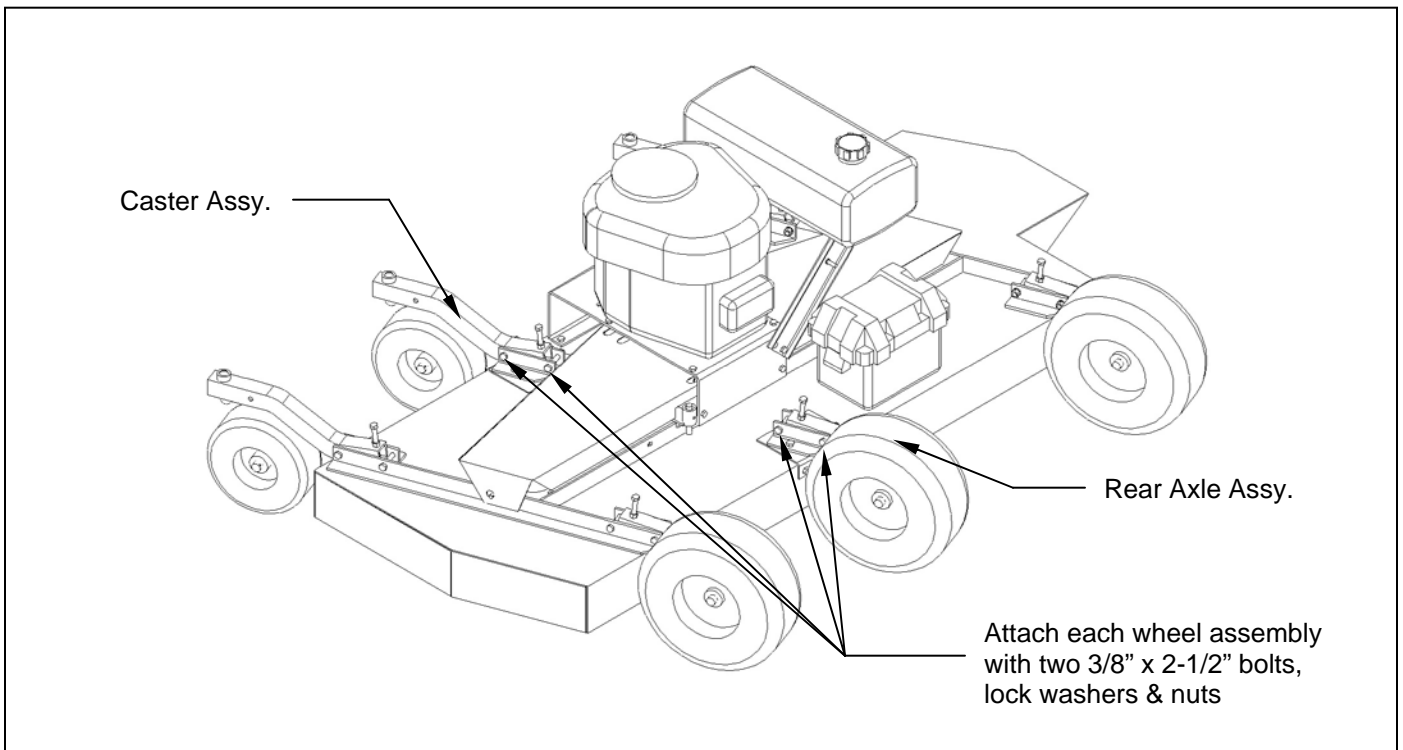
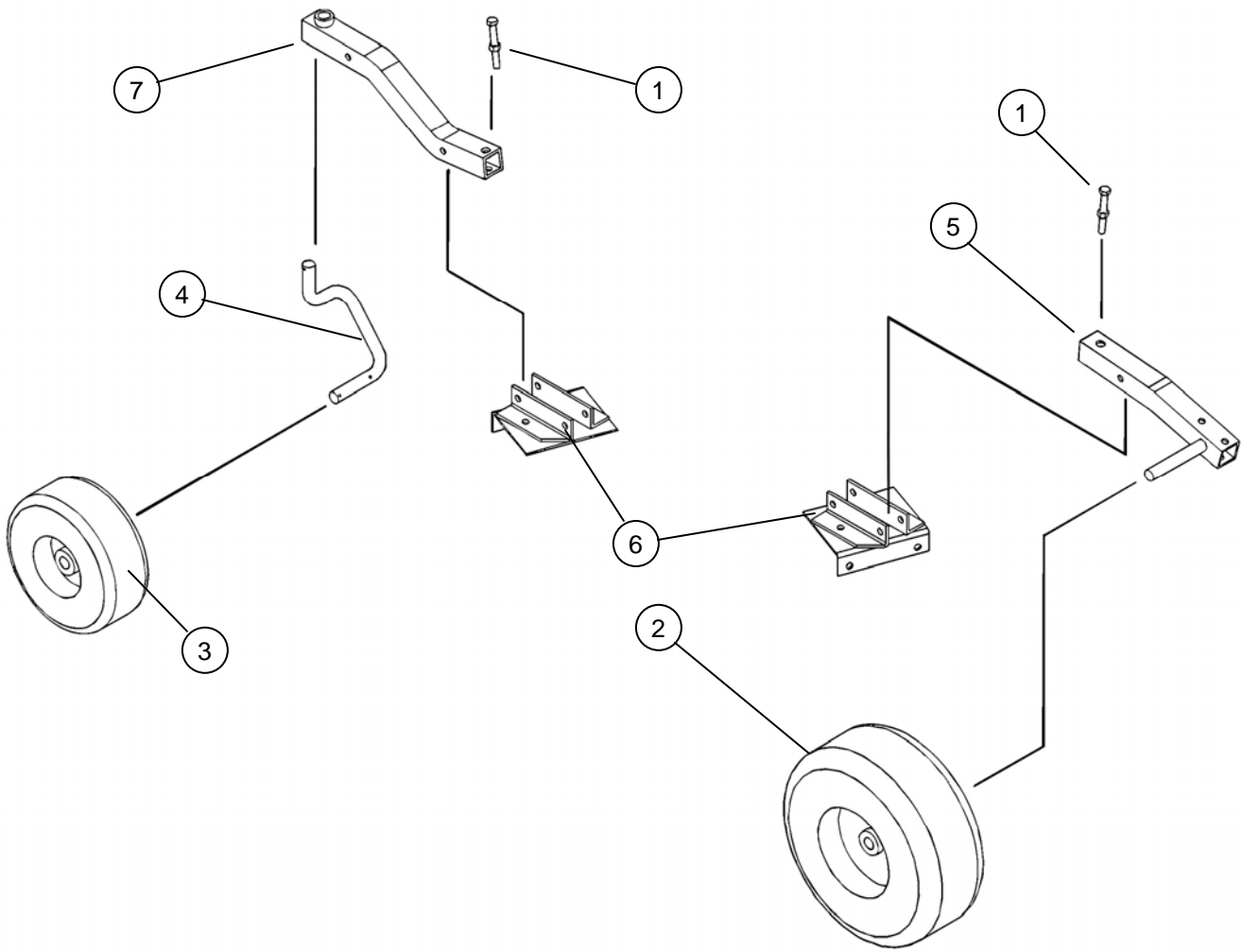


Figure 2: Installation of caster assemblies and rear axle assemblies

# FLOATATION KIT PARTS



## PARTS LIST

<u>Item</u>	<u>Part #</u>	<u>Description</u>	<u>Quantity</u>
1	202135	Hex Head Bolt (3/8" x 3" Fully Threaded)	2
2	226001	Offset Wheel Assy. (13/500 x 6, 2 ply turf)	1
	243008	Precision Sealed Wheel Bearings (1-3/8 O.D. x 3/4" I.D.)	2
3	226002	Centered Wheel Assy. (9/3.50 x 4, semi pneumatic slick)	1
	243008	Precision Sealed Wheel Bearings (1-3/8 O.D. x 3/4" I.D.)	2
4	600059	Caster Axle	1
5	900005	Rear Axle	1
6	900020	Wheel Support	2
7	900021	Caster Support	1